

THE COTTAGE HOMES SERIES

The Cottage Homes

# Coldwater

12' x 33'

DIMENSIONS

363 sf

LIVING SPACE

1

BEDROOMS

1

BATHROOMS

OVERVIEW

Tiny miniature home anywhere you need living space

Heritage Home Center

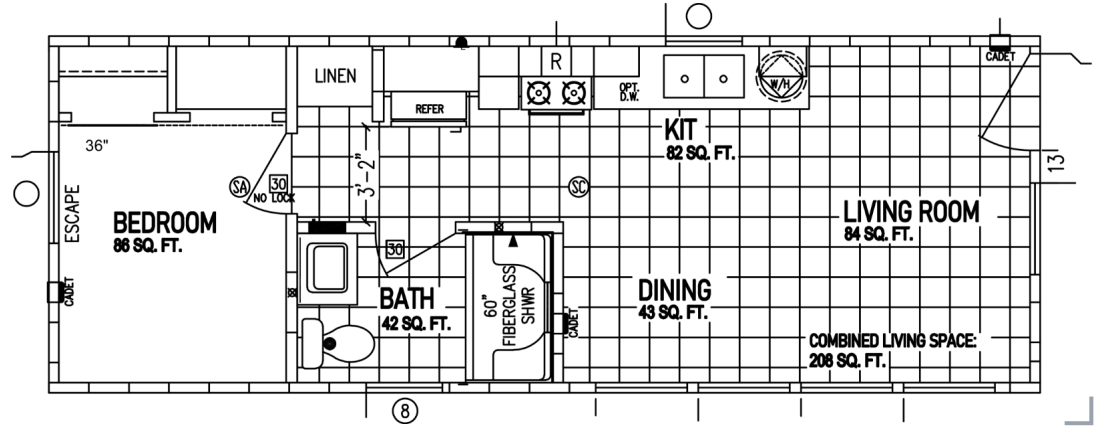
(425) 353-5464

or Request Firm Quote

EMAIL US

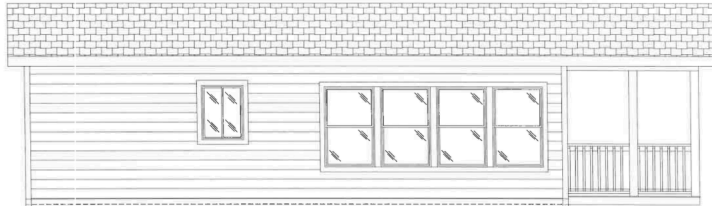
01 FLOOR PLAN

363 SQ FT · 12' x 33'

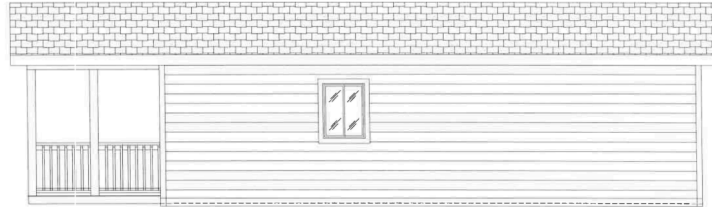


02 FRONT ELEVATION

HER35491-COTTAGE-COLDWATER (12X33)



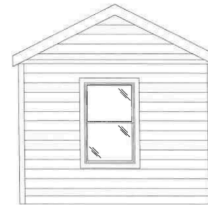
FRONT SIDEWALL



REAR SIDEWALL



FRONT ENDWALL



REAR ENDWALL

|   |                   |         |                              |        |                                 |  |        |
|---|-------------------|---------|------------------------------|--------|---------------------------------|--|--------|
| 955   | Clayton Hermiston |         | 400 W ELM, HERMISTON, OREGON |        | SCALE: 1/2"=1'-0" DRAWN BY: BAL |  |        |
|   | PLAN:             | 12 X 33 | STOCK FOR HERITAGE           | SHEET: | ELEVATION                       | DATE: 2025-5-20  |        |
| SERIES:   |                   | COTTAGE | 52026                        | 35-491 | MODEL:                          | COLDWATER  | REV: . |
| <small>V:\TYPICAL\HER35491-COTTAGE-COLDWATER (12X33).dwg, 5/20/2025 3:47:43 PM, LopezBm, V:\51916101\JM Brehm 530</small> |                   |         |                              |        |                                 | <small>FILE: V:\TYPICAL\HER35491-COTTAGE-COLDWATER (12X33)</small> |        |

# The Cottage Homes Coldwater

1 Bedrooms | 1 Bathrooms | 363 sq ft

## STANDARD FEATURES

- ✓ ANSI 119.5 Code
- ✓ 3/8" LP Smartpanel Vertical Siding
- ✓ Housewrap Under Siding - All Around
- ✓ Architectural Shingles
- ✓ Vented Ridgecap (100% of Ridgeline)
- ✓ 19/32 T&G OSB Floor Decking
- ✓ 2 x 4 Exterior Walls
- ✓ 2 x 4 Interior Walls
- ✓ 8' Sidewalls w/Flat Ceiling
- ✓ 36" 6 Panel Fiberglass Front Door
- ✓ White Vinyl Framed, Argon Gas, Low "E" Windows
- ✓ Energy Star Rated 18 Cu. Ft. Refrigerator w/Icemaker
- ✓ Vented Rangehood - Stainless
- ✓ Self-Cleaning Gas Range - Stainless
- ✓ Full Hardwood Cabinet System - Doors, Face Frames and Sidepanels
- ✓ 42" Overhead Cabinets
- ✓ Flat Crown Moulding on Overheads
- ✓ Concealed Cabinet Door Hinges

## MOST POPULAR UPGRADES

- ✓ Cement Lap Siding
- ✓ 8' Covered Porch
- ✓ Sliding Glass Door
- ✓ Solid Surface Countertops
- ✓ Wood Shelving in Closets and Pantries
- ✓ 2" Decorative Blinds
- ✓ 34 x 60 Palisade Walk In Shower

**Heritage Home Center**  
Washington's Price and Volume Leader

**(425) 353-5464**

CALL TO TOUR

[Request Firm Quote](#)

EMAIL US

Features/specs subject to change.